



Building a  
Better Health  
Service

Seirbhís Sláinte  
Níos Fearr  
á Forbairt

## Health and Social Care in Ireland Some Initial Observations

### Health Management Institute

Dean Sullivan  
HSE Deputy DG - Strategy

16 April 2018

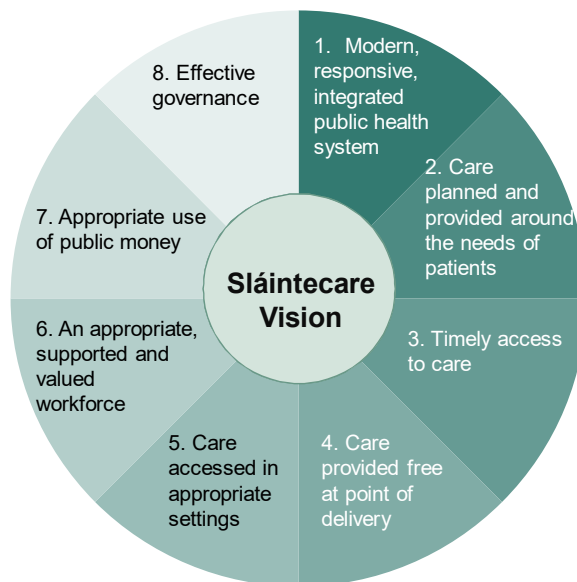
### Where are we?

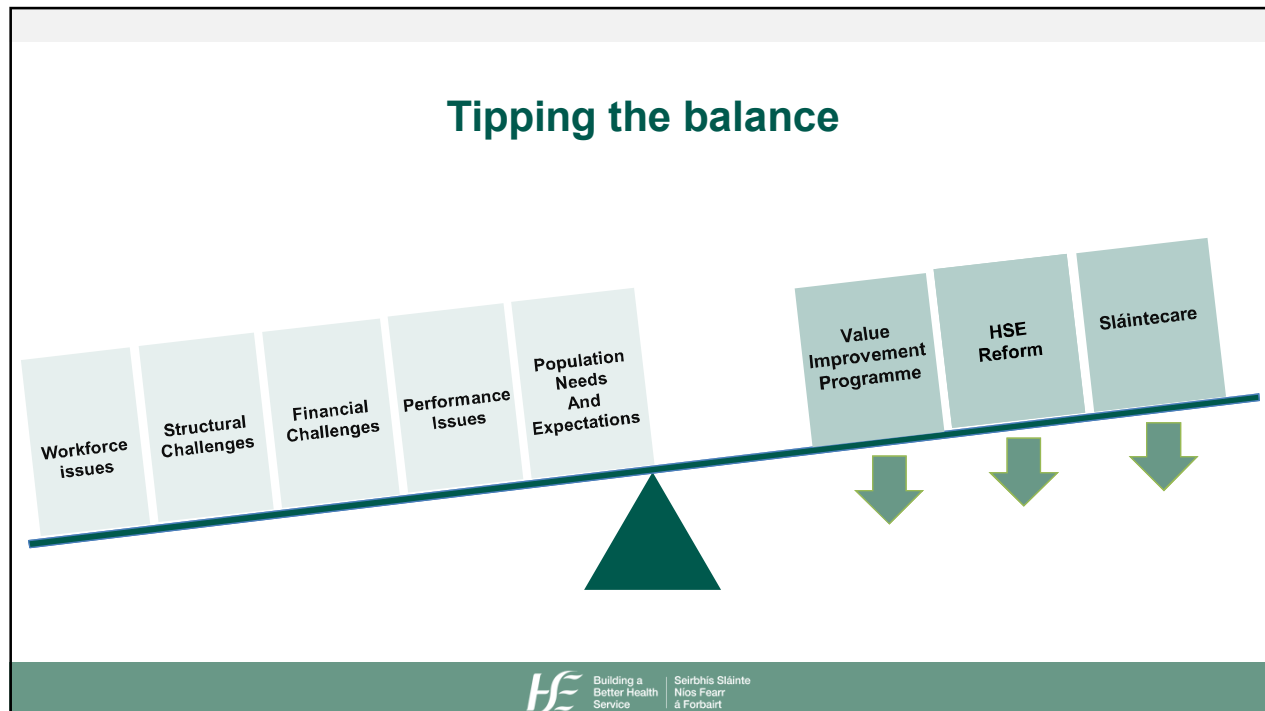
- Hospitals struggling to respond to presenting demand
- Community services underdeveloped
- Significant unmet need
- Delivery arrangements fragmented

## Where are we (cont.)?

- Access to healthcare is unequal
- Difficult workforce issues
- Major financial challenges
- Failure to meet public expectations


## Sláintecare presents a compelling way forward



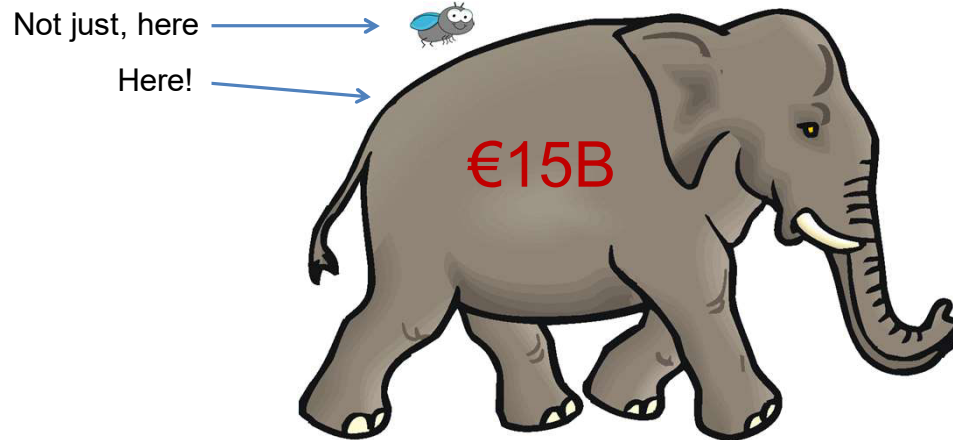


## Issues and opportunities

- Excellent work being taken forward but...
- Opportunities for more effective:
  - integration and coherence
  - quantification of desired aims and objectives
  - robust prioritisation to deliver these
  - focus on implementation vs design
- Herculean effort now required to effect change at the scale and pace required
- Strategic commissioning, not passive purchasing

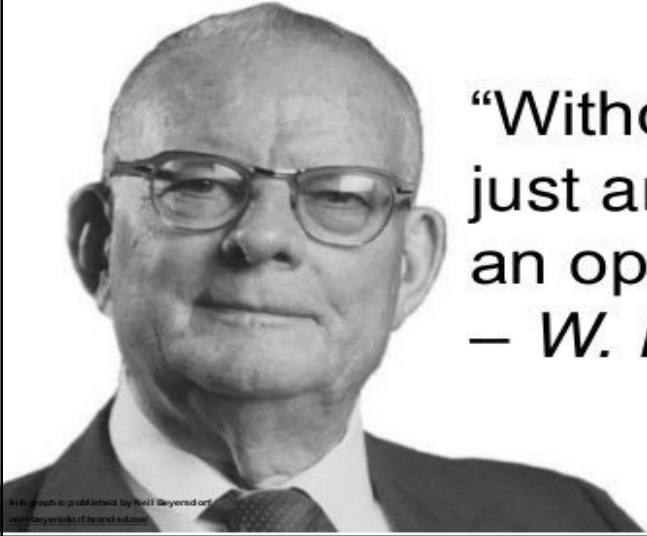
 Building a Better Health Service | Seirbhís Sláinte Níos Fearr A Forbairt

## Where our focus needs to be



## Actions need to be taken on the basis of robust data and evidence





“Without data you’re just another person with an opinion.”  
– *W. Edwards Deming*

Photograph published by Neil Beyersdorp  
www.beyersdorp.com

**HE** Building a Better Health Service | Seirbhís Sláinte Níos Fearr & Forbairt

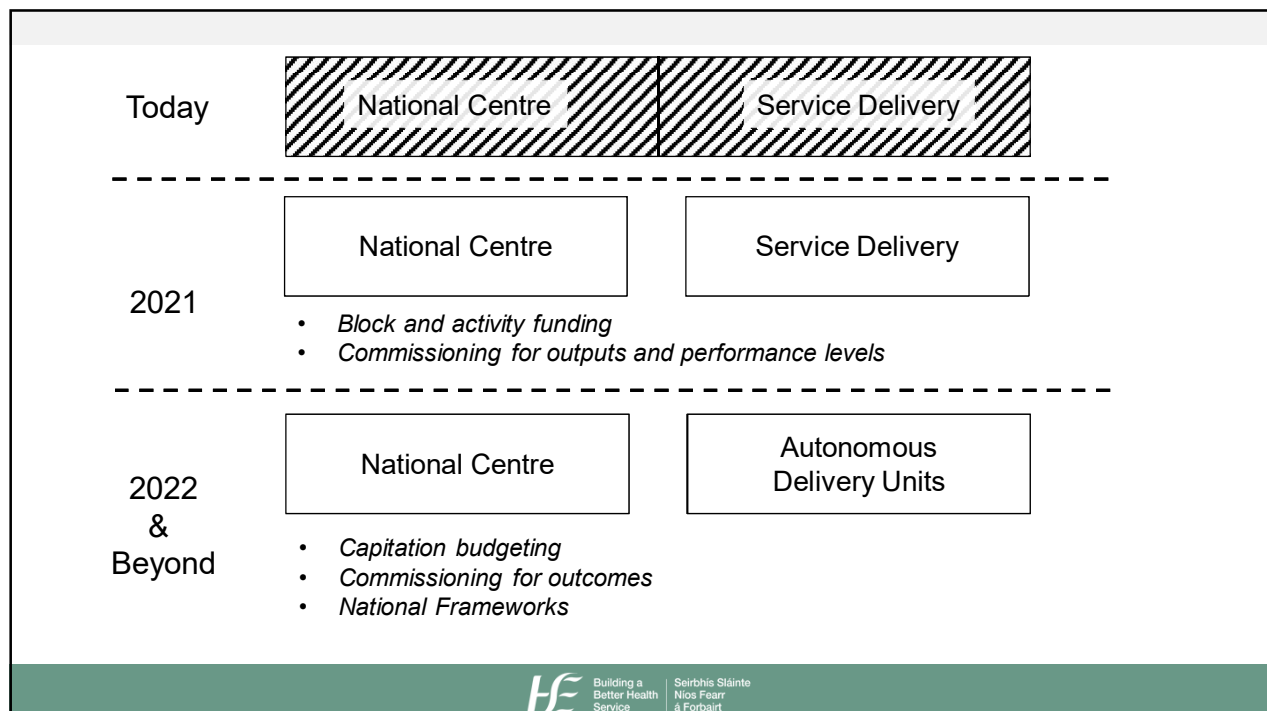
## Key Reform Themes

- Improve population health
- Deliver care closer to home
- Develop specialist hospital care networks
- Improve quality, safety and value

**HE** Building a Better Health Service | Seirbhís Sláinte Níos Fearr & Forbairt

## Need for structural reform

- Move away from a command and control model to one that supports and enables a strong, flexible and responsive delivery system
- Strong, lean National HSE Centre with responsibility for strategy, planning and standard setting (one more equipped to lead and oversee, than to directly control and deliver)
- Delivery organisations with appropriate autonomy, clear reporting structures operating as part of a national health service with overall national policies and standards
- Robust delivery structures **essential** to long term success



## Conclusions

- Much good work to build upon
- Huge challenges
- Sláintecare an excellent foundation
- Need for commitment, support and alignment at all levels

Thanks for listening!

